



شركة الاستثمار الوطنية
NATIONAL INVESTMENTS COMPANY

Bursa Kuwait – Daily Market Report MENA Securities – Research & Studies Dep.

17th November 2022



www.nic.com.kw

DAILY MARKET COVERAGE REPORT

NIC MENA SECURITIES - RESEARCH AND STUDIES DEP



Kuwait Market Watch

Thursday, November 17, 2022

Index	Close	DTD Chg Net	DTD (%)	YTD (%)	52W High	52W Low	MKT CAP Bn (KD)	PBV (x)	PE (x)	DY (%)
All Share Index	7,610.47	9.14	0.12%	8.05%	8,472.15	6,788.83	45.18	1.99	26.71	3.96
Premier Index	8,523.25	8.31	0.10%	11.57%	9,437.37	7,343.90	35.66	2.20	21.94	4.39
Main Index	5,694.21	12.19	0.21%	-3.26%	6,600.62	5,190.37	9.52	1.21	44.59	2.34
NIC 50 Index	9,550.01	7.50	0.08%	12.06%	10,553.82	8,195.69	34.96	2.20	21.94	4.39

Index	Value Mn(KD)	Volume (Mn share)
All Share Index	45.37	215.68
Premier Index	29.97	64.95
Main Index	15.40	150.73
NIC 50 Index	41.85	161.09

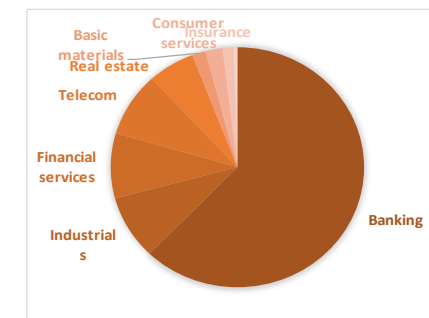
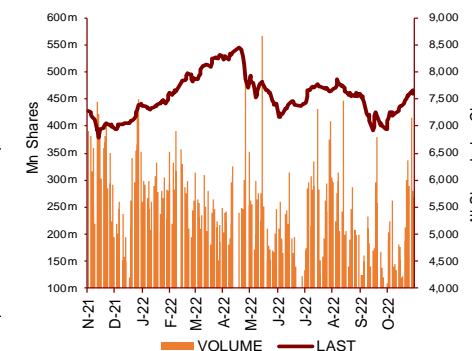
Market Breadth	UP	Down	No Chg
All Share Index	66	38	50
Premier Index	14	6	6
Main Index	53	32	44
NIC 50 Index	28	12	10

Today's Top 5 Gainer %	Close KD	Value KD	DTD (%)
Credit Rating and Collection	0.021	2,126	33.77%
Salbookh Trading	0.016	19,844	8.61%
Jiyad Holding	0.026	466,886	8.37%
Al-Arabiya Real Estate	0.033	162,119	5.77%
Energy House Holding	0.022	33,411	5.39%

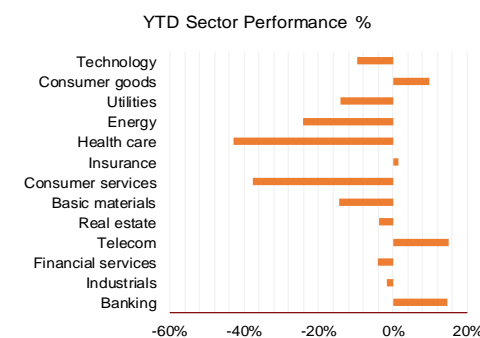
Today's Top 5 Loser %	Close KD	Value KD	DTD (%)
Metal and Recycling	0.078	2,913	-16.83%
Wethaq Takaful Insurance	0.032	169,860	-12.97%
Real Estate Trade Centers	0.060	1,299	-7.23%
Future Kid Entertainment a	0.121	62,358	-6.20%
Amar Finance and Leasing	0.060	390	-4.76%

Today's Top 5 by Value	Close KD	Trade Val Mn(KD)	DTD (%)
Kuwait Finance House	0.862	11.25	0.35%
National Bank of Kuwait	1.117	3.54	-0.62%
Mobile Telecommunications	0.617	2.74	0.33%
GFH Financial Group	0.083	2.28	2.10%
Agility Public Warehousing	0.787	1.98	0.00%

Top 5 by Volume	Close KD	Trade Vol Mn(Shrs)	DTD (%)
GFH Financial Group	0.083	27.67	2.10%
Jiyad Holding	0.026	18.40	8.37%
Aayan Leasing and Investm	0.143	13.73	0.00%
Kuwait Finance House	0.862	13.09	0.35%
AL Safat Investment	0.126	11.20	3.28%

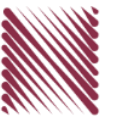


Sector	Close	DTD Chg Net	DTD (%)	YTD (%)	52W High	52W Low	MKT CAP Bn (KD)	PBV (x)	PE (x)	DY (%)
Banking	1,860.77	-1.610	-0.09%	14.8%	1,992.2	1,557.8	27.737	1.69	26.22	1.80
Industrials	1,126.01	2.330	0.21%	-1.6%	1,443.6	976.3	3.845	1.02	26.23	3.82
Financial services	1,380.50	13.820	1.01%	-4.0%	1,678.3	1,190.4	3.905	1.05	78.71	2.79
Telecom	1,257.80	6.240	0.50%	14.9%	1,514.7	1,055.9	3.849	1.74	13.95	2.72
Real estate	1,280.50	3.950	0.31%	-3.8%	1,419.8	1,155.8	2.674	0.71	29.61	1.29
Basic materials	877.38	0.000	0.00%	-14.4%	1,233.3	800.8	0.765	1.20	8.51	6.14
Consumer services	460.50	3.730	0.82%	-37.5%	763.0	443.8	0.974	2.15	12.25	2.11
Insurance	1,552.16	-5.380	-0.35%	1.6%	1,665.2	1,434.5	0.619	0.91	44.88	5.25
Health care	454.28	0.000	0.00%	-43.0%	821.7	420.4	0.225	15.72	13.18	1.22
Energy	1,097.73	12.290	1.13%	-24.0%	1,506.8	975.7	0.222	0.80	20.43	2.22
Utilities	515.79	0.000	0.00%	-14.0%	631.6	494.7	0.216	1.82	16.12	9.18
Consumer goods	1,475.55	9.060	0.62%	9.7%	1,641.0	1,208.7	0.139	0.96	36.78	2.19
Technology	624.92	6.550	1.06%	-9.6%	800.3	539.1	0.009	0.76	NM	-
	7,610.47	9.14	0.12%	8.1%	8,472.2	6,788.8	45.18	1.99	26.71	3.96



DAILY MARKET COVERAGE REPORT

NIC MENA SECURITIES - RESEARCH AND STUDIES DEP



Premier Market

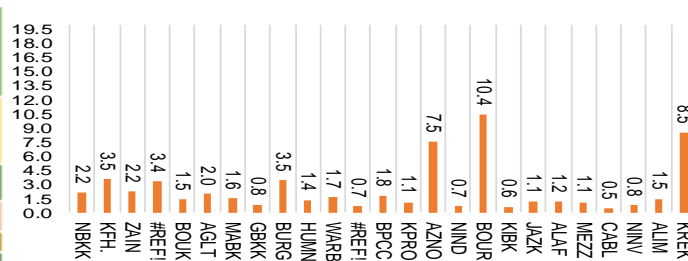
Thursday, November 17, 2022

Premier Market	Price			Valuation Multiples			MKT Cap	Price Performance		Trading Indicators		ROE	ROA	52 Week (KD)		MKT Cap
	Close (KD)	Day Δ	Day % Δ	PBV(X)	PE(X)	DY%	Mn KD	MTD(%)	YTD (%)	Value (Mn KD)	(Mn Shrs)	(%)	(%)	High	Low	%
National Bank of Kuwait	1.117	-0.007	-0.62%	2.16	18.53	2.16	8,436	4%	18%	3.54	3.17	11.7%	1.5%	1.143	0.903	23.84%
Kuwait Finance House	0.862	0.003	0.35%	3.54	28.98	1.27	11,406	6%	14%	11.25	13.09	12.4%	1.6%	1.039	0.720	32.24%
Mobile Telecommunications	0.617	0.002	0.33%	2.21	14.15	5.37	2,670	3%	3%	2.74	4.45	15.7%	4.3%	0.698	0.564	7.55%
Boubyan Bank	0.843	-0.001	-0.12%	3.35	54.91	0.53	3,151	2%	18%	0.46	0.54	6.8%	0.8%	0.965	0.681	8.91%
Agility Public Warehousing	0.787	0.000	0.00%	1.46	51.88	2.12	1,988	0%	0%	1.98	2.52	2.3%	1.9%	1.062	0.634	5.62%
Mabane Co.	0.896	0.003	0.34%	1.97	18.48	1.48	1,113	3%	19%	0.30	0.34	11.1%	5.5%	0.910	0.717	3.14%
Gulf Bank	0.339	-0.004	-1.17%	1.56	18.01	1.94	1,085	-1%	29%	1.69	4.96	8.9%	0.9%	0.385	0.230	3.07%
Burgan Bank	0.228	-0.001	-0.44%	0.83	22.76	2.08	748	5%	-4%	0.10	0.44	3.8%	0.7%	0.307	0.205	2.12%
Human Soft Holding	3.422	-0.008	-0.23%	3.45	7.23	11.66	416	2%	6%	0.14	0.04	49.6%	34.9%	3.704	3.006	1.18%
Warba Bank	0.252	0.004	1.61%	1.36	25.03	0.00	504	5%	-9%	1.33	5.32	5.8%	0.6%	0.298	0.216	1.42%
Boubyan Petrochemical	0.813	0.000	0.00%	1.66	9.20	7.38	424	2%	-5%	0.23	0.28	19.1%	10.1%	1.125	0.769	1.20%
Kuwait Projects Company Holding	0.145	0.006	4.32%	0.71	20.54	3.60	355	23%	-2%	1.15	8.08	-2.8%	0.0%	0.215	0.112	1.00%
Shamal Az-Zour Al-Oula Power & Water	0.196	0.000	0.00%	1.82	16.12	9.18	216	2%	-14%	0.04	0.19	14.8%	2.7%	0.240	0.188	0.61%
National Industries Group Holding	0.246	0.002	0.82%	1.08	12.29	4.55	529	5%	1%	1.13	4.61	5.3%	2.9%	0.314	0.207	1.50%
Boursa Kuwait Securities Co	2.360	0.017	0.73%	7.51	24.37	2.77	474	4%	16%	0.03	0.01	32.4%	22.9%	2.870	1.800	1.34%
Kuwait International Bank	0.204	-0.001	-0.49%	0.65	36.94	1.88	216	8%	-2%	1.94	9.49	1.7%	0.3%	0.259	0.186	0.61%
Jazeera Airways	1.785	0.025	1.42%	10.41	13.43	2.61	393	7%	36%	0.21	0.12	92.1%	11.6%	2.099	0.981	1.11%
Alafco Aviation Lease and Finance	0.170	0.000	0.00%	0.63	NM	0.00	162	1%	-22%	0.04	0.23	-15.9%	-3.4%	0.251	0.162	0.46%
Mezzan Holding	0.366	0.007	1.95%	1.14	36.78	4.37	114	1%	-38%	0.50	1.38	-7.2%	-2.8%	0.605	0.345	0.32%
Gulf Cable and Electrical Industries	1.275	0.022	1.76%	1.21	12.11	4.79	265	6%	44%	0.11	0.09	10.2%	NM	1.850	0.860	0.75%
National Investments	0.269	0.001	0.37%	1.09	19.72	16.79	214	13%	22%	0.10	0.36	5.4%	4.4%	0.475	0.201	0.61%
Alimtiarz Investment Group	0.080	0.000	0.25%	0.47	NM	11.26	82	7%	-32%	0.04	0.56	-0.9%	-0.4%	0.138	0.069	0.23%
Kuwait Real Estate	0.110	0.000	0.00%	0.81	16.08	2.65	102	0%	-37%	0.39	3.58	4.9%	1.9%	0.187	0.097	0.29%
Integrated Holding	0.361	0.005	1.40%	1.47	27.22	2.81	91	11%	-4%	0.30	0.83	5.4%	3.4%	0.478	0.321	0.26%
ALI ALGanim	0.830	0.002	0.24%	8.45	11.92	5.74	227	4%	nm	0.22	0.26	30.5%	12.1%	0.966	0.750	0.64%
Total		8.31	0.10%	2.20	21.94	4.39	35,381	4.0%	11.6%	29.97	64.69					100%

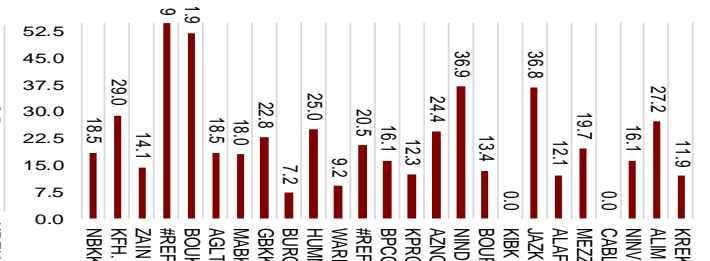
Market Capitalization



Price to Book Value

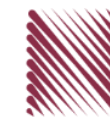


Price to Earning Value



DAILY MARKET COVERAGE REPORT

NIC MENA SECURITIES - RESEARCH AND STUDIES DEP



Premier Market Company	Price			Valuation Multiples			MKT Cap Mn KD	Price Performance		ROE (%)	ROA (%)
	Close (kD)	Day Δ	Day % Δ	PBV(X)	PE(X)	DY%		MTD(%)	YTD (%)		
National Bank of Kuwait	1.117	-0.007	-0.62%	2.16	18.5	2.16	8,436	3.6%	18.4%	11.7%	1.5%
Kuwait Finance House	0.862	0.003	0.35%	3.54	29.0	1.27	11,406	6.2%	13.6%	12.4%	1.6%
Mobile Telecommunications	0.617	0.002	0.33%	2.21	14.1	5.37	2,670	3.0%	3.4%	15.7%	4.3%
Boubyan Bank	0.843	-0.001	-0.12%	3.35	54.9	0.53	3,151	2.3%	18.5%	6.8%	0.8%
Agility Public Warehousing	0.787	0.000	0.00%	1.46	51.9	2.12	1,988	0.4%	-0.1%	2.3%	1.9%
Mabane Co.	0.896	0.003	0.34%	1.97	18.5	1.48	1,113	2.8%	19.4%	11.1%	5.5%
Gulf Bank	0.339	-0.004	-1.17%	1.56	18.0	1.94	1,085	-1.2%	29.1%	8.9%	0.9%
Burgan Bank	0.228	-0.001	-0.44%	0.83	22.8	2.08	748	4.6%	-4.2%	3.8%	0.7%
Human Soft Holding	3.422	-0.008	-0.23%	3.45	7.2	11.66	416	1.8%	6.4%	49.6%	34.9%
Warba Bank	0.252	0.004	1.61%	1.36	25.0	0.00	504	4.6%	-9.5%	5.8%	0.6%
Boubyan Petrochemical	0.813	0.000	0.00%	1.66	9.2	7.38	424	2.0%	-4.6%	19.1%	10.1%
Kuwait Projects Company Holding	0.145	0.006	4.32%	0.71	20.5	3.60	355	22.9%	-2.1%	-2.8%	0.0%
Shamal Az-Zour Al-Oula Power & Water	0.196	0.000	0.00%	1.82	16.1	9.18	216	1.6%	-14.0%	14.8%	2.7%
National Industries Group Holding	0.246	0.002	0.82%	1.08	12.3	4.55	529	5.1%	1.3%	5.3%	2.9%
Boursa Kuwait Securities Co	2.360	0.017	0.73%	7.51	24.4	2.77	474	3.9%	16.0%	32.4%	22.9%
Kuwait International Bank	0.204	-0.001	-0.49%	0.65	36.9	1.88	216	7.9%	-2.2%	1.7%	0.3%
Jazeera Airways	1.785	0.025	1.42%	10.41	13.4	2.61	393	6.8%	36.4%	92.1%	11.6%
Alafco Aviation Lease and Finance	0.170	0.000	0.00%	0.63	NM	0.00	162	1.2%	-22.0%	-15.9%	-3.4%
Mezzan Holding	0.366	0.007	1.95%	1.14	36.8	4.37	114	1.1%	-37.8%	-7.2%	-2.8%
Gulf Cable and Electrical Industries	1.275	0.022	1.76%	1.21	12.1	4.79	265	5.8%	43.9%	10.2%	8.4%
National Investments	0.269	0.001	0.37%	1.09	19.7	16.79	214	12.6%	22.4%	5.4%	4.4%
Alimtiq Investment Group	0.080	0.000	0.25%	0.47	NM	11.26	82	7.4%	-32.3%	-0.9%	-0.4%
Kuwait Real Estate	0.110	0.000	0.00%	0.81	16.1	2.65	102	0.0%	-36.7%	4.9%	1.9%
Integrated Holding	0.361	0.005	1.40%	1.47	27.2	2.81	91	10.7%	-3.8%	5.4%	3.4%
ALI ALGanim	0.830	0.002	0.24%	4.15	11.9	5.74	227	4.4%	nm	30.5%	12.1%
Total		8.31	0.10%	2.20	21.94	4.39	35,154	4.0%	11.6%		

.bcp	Premier Market Discription	Price			Moving Average		RSI 14 Day	MKT Cap Mn KD	Price Performance		52 Week (KD)	
		Close (kD)	Day Δ	Day % Δ	50 Day	200 Day			MTD(%)	YTD (%)	High	Low
	Premier Index	8,523	8.31	0.10%	8,209	8,477	81	35,154	4.0%	11.5%	9,437	7,344

Top 5 Performrs (Today's Price Change)

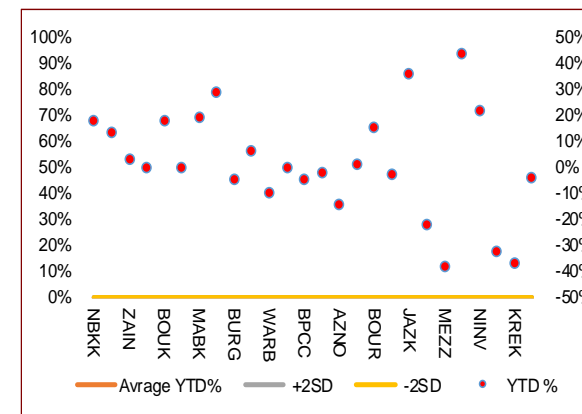
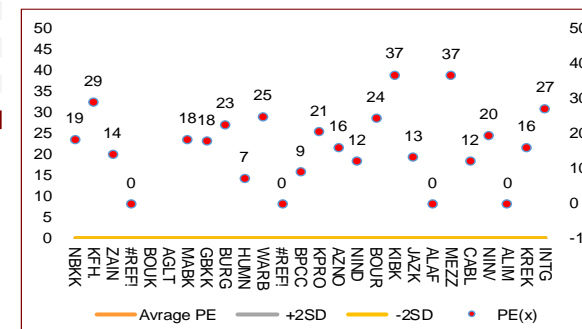
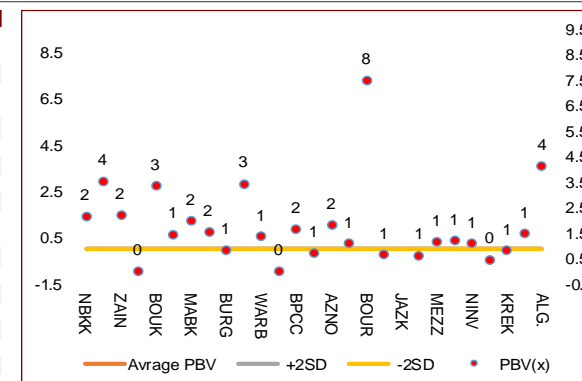
KPRO.KW	Kuwait Projects Company Holding	0.145	0.006	4.32%	0.131	0.161	79	355	22.9%	-2.1%	0.215	0.112
MEZZ.KW	Mezzan Holding	0.366	0.007	1.95%	0.378	0.478	43	114	1.1%	-37.8%	0.605	0.345
CABL.KW	Gulf Cable and Electrical Industries	1.275	0.022	1.76%	1.207	1.352	72	265	5.8%	43.9%	1.850	0.860
WARB.KW	Warba Bank	0.252	0.004	1.61%	0.238	0.259	65	504	4.6%	-9.5%	0.298	0.216
INTG.KW	Integrated Holding	0.361	0.005	1.40%	0.361	0.397	71	91	10.7%	-3.8%	0.478	0.321

Middel Performrs (Today's Price Change)

NIND.KW	National Industries Group Holding	0.246	0.002	0.82%	0.240	0.258	69	529	5.1%	1.3%	0.314	0.207
BOURSA.KW	Boursa Kuwait Securities Co	2.360	0.017	0.73%	2.242	2.389	80	474	3.9%	16.0%	2.870	1.800
NINV.KW	National Investments	0.269	0.001	0.37%	0.254	0.316	77	214	12.6%	22.4%	0.475	0.201
KFH.KW	Kuwait Finance House	0.862	0.003	0.35%	0.838	0.877	80	11,406	6.2%	13.6%	1.039	0.720
MABK.KW	Mabane Co.	0.896	0.003	0.34%	0.870	0.823	65	1,113	2.8%	19.4%	0.910	0.717
ZAIN.KW	Mobile Telecommunications	0.617	0.002	0.33%	0.592	0.611	70	2,670	3.0%	3.4%	0.698	0.564
ALIMK.KW	Alimtiq Investment Group	0.080	0.000	0.25%	0.080	0.104	69	82	7.4%	-32.3%	0.138	0.069
AGLT.KW	Agility Public Warehousing	0.787	0.000	0.00%	0.750	0.854	59	1,988	0.4%	-0.1%	1.062	0.634
BPCC.KW	Boubyan Petrochemical	0.813	0.000	0.00%	0.100	0.100	71	424	2.0%	-4.6%	1.210	0.996
ALQK.KW	Qurain Petrochemical Industries	0.261	0.000	0.00%	0.270	0.335	52	280	3.6%	-24.8%	0.403	0.210
KREK.KW	Kuwait Real Estate	0.110	0.000	0.00%	0.109	0.141	57	102	0.0%	-36.7%	0.187	0.097
ALAF.KW	Alafco Aviation Lease and Finance	0.170	0.000	0.00%	0.176	0.200	64	162	1.2%	-22.0%	0.251	0.162
BOUK.KW	Boubyan Bank	0.843	-0.001	-0.12%	0.810	0.813	81	3,151	2.3%	18.5%	0.965	0.681

Bottom 5 Performrs (Today's Price Change)

HUMN.KW	Human Soft Holding	3.422	-0.008	-0.23%	3.339	3.328	79	416	1.8%	6.4%	3.704	3.006
BURG.KW	Burgan Bank	0.228	-0.001	-0.44%	0.226	0.252	80	748	4.6%	-4.2%	0.307	0.205
KIBK.KW	Kuwait International Bank	0.204	-0.001	-0.49%	0.200	0.218	72	216	7.9%	-2.2%	0.259	0.186
NBKK.KW	National Bank of Kuwait	1.117	-0.007	-0.62%	1.050	1.044	79	8,436	3.6%	18.4%	1.143	0.903
GBKK.KW	Gulf Bank	0.339	-0.004	-1.17%	0.332	0.325	56	1,085	-1.2%	29.1%	0.385	0.230



DAILY MARKET COVERAGE REPORT

NIC MENA SECURITIES - RESEARCH AND STUDIES DEP



Banking Sector	Price			Valuation Multiples			MKT Cap	Price Performance		Trading Indicators		ROE	ROA	52 Week (KD)		MKT Cap
Company	Close (KD)	Day Δ	Day % Δ	PBV(X)	PE(X)	DY%	Mn KD	MTD(%)	YTD (%)	Value (Mn KD)	(Mn Shrs)	(%)	(%)	High	Low	%
National Bank of Kuwait	1.117	-0.007	-0.62%	2.16	18.53	2.16	8,436	3.6%	18.4%	3.54	3.17	11.7%	1.5%	1.143	0.903	18.79%
Kuwait Finance House	0.862	0.003	0.35%	3.54	28.98	1.27	11,406	6.2%	13.6%	11.25	13.09	12.4%	1.6%	1.039	0.720	25.40%
Boubyan Bank	0.843	-0.001	-0.12%	3.35	54.91	0.53	3,151	2.3%	18.5%	0.46	0.54	6.8%	0.8%	0.965	0.681	7.02%
Commercial Bank of Kuwait	0.480	0.000	0.00%	1.14	11.96	4.17	951	-1.2%	-4.2%	0.00	0.00	9.9%	1.9%	0.549	0.456	2.12%
Gulf Bank	0.339	-0.004	-1.17%	1.56	18.01	1.94	1,085	-1.2%	29.1%	1.69	4.96	8.9%	0.9%	0.385	0.230	2.42%
Burgan Bank	0.228	-0.001	-0.44%	0.83	22.76	2.08	748	4.6%	-4.2%	0.10	0.44	3.8%	0.7%	0.307	0.205	1.67%
Ahli United Bank	0.291	0.001	0.34%	0.98	25.57	1.64	655	9.0%	-1.5%	0.24	0.83	3.8%	0.8%	0.324	0.250	1.46%
Warba Bank	0.252	0.004	1.61%	1.36	25.03	0.00	504	4.6%	-9.5%	1.33	5.32	5.8%	0.6%	0.298	0.216	1.12%
Al Ahli Bank of Kuwait	0.330	-0.002	-0.60%	0.98	21.81	1.43	584	-0.3%	37.2%	0.62	1.87	4.5%	0.6%	0.355	0.216	1.30%
Kuwait International Bank	0.204	-0.001	-0.49%	0.65	36.94	1.88	216	7.9%	-2.2%	1.94	9.49	1.7%	0.3%	0.259	0.186	0.48%
Total Banking Sector - 10 Companies							27,737			21.17	39.71					61.78%

Basic Materials	Price			Valuation Multiples			MKT Cap	Price Performance		Trading Indicators		ROE	ROA	52 Week (KD)		MKT Cap
Company	Close (KD)	Day Δ	Day % Δ	PBV(X)	PE(X)	DY%	Mn KD	MTD(%)	YTD (%)	Value (Mn KD)	(Mn Shrs)	(%)	(%)	High	Low	%
Boubyan Petrochemical	0.813	0.000	0.00%	1.66	9.20	7.38	424	2.01%	-4.58%	0.23	0.28	19.1%	10.1%	1.125	0.769	0.94%
Al Kout Industrial Projects	0.390	0.000	0.00%	1.28	4.49	10.26	39	0.00%	-21.37%	0.00	0.00	31.0%	21.9%	0.545	0.390	0.09%
Kuwait Foundry	0.294	0.000	0.00%	1.22	12.53	0.00	21	1.38%	-20.33%	0.00	0.00	10.7%	10.3%	0.424	0.260	0.05%
Total Basic Materials - 3 Companies							485			0.23	0.28					1.08%

Consumer Goods	Price			Valuation Multiples			MKT Cap	Price Performance		Trading Indicators		ROE	ROA	52 Week (KD)		MKT Cap
Company	Close (KD)	Day Δ	Day % Δ	PBV(X)	PE(X)	DY%	Mn KD	MTD(%)	YTD (%)	Value (Mn KD)	(Mn Shrs)	(%)	(%)	High	Low	%
Mezzan Holding	0.366	0.007	1.95%	1.14	36.78	4.37	114	1.1%	-37.8%	0.50	1.38	-7.2%	-2.8%	0.605	0.345	0.25%
Livestock Transport and Trading	0.122	-0.005	-3.94%	0.78	NM	0.00	26	1.7%	-30.2%	0.00	0.00	-14.5%	-8.2%	0.187	0.112	0.06%
Total Consumer Goods - 2 Companies							139			0.50	1.38					0.31%

Consumer Services	Price			Valuation Multiples			MKT Cap	Price Performance		Trading Indicators		ROE	ROA	52 Week (KD)		MKT Cap
Company	Close (KD)	Day Δ	Day % Δ	PBV(X)	PE(X)	DY%	Mn KD	MTD(%)	YTD (%)	Value (Mn KD)	(Mn Shrs)	(%)	(%)	High	Low	%
Jazeera Airways	1.785	0.025	1.42%	10.41	13.43	2.61	393	6.8%	36.4%	0.21	0.12	92.1%	11.6%	2.099	0.981	0.87%
Kuwait National Cinema	1.000	0.000	0.00%	1.19	10.68	3.00	93	10.1%	13.4%	0.00	0.00	11.6%	5.3%	1.040	0.850	0.21%
Oula Fuel Marketing	0.148	0.001	0.68%	0.93	15.67	3.40	60	2.1%	-5.8%	0.06	0.39	5.6%	2.9%	0.168	0.140	0.13%
Al Soor Fuel Marketing	0.148	-0.002	-1.33%	0.91	18.94	3.33	60	-0.7%	-3.2%	0.02	0.14	4.7%	3.5%	0.167	0.142	0.13%
Sultan Center Food Products	0.116	0.001	0.87%	0.66	0.92	0.00	32	4.5%	-45.2%	0.00	0.01	74.2%	12.2%	0.246	0.103	0.07%
Jiyad Holding	0.026	0.002	8.37%	0.27	NM	0.00	5	18.3%	-70.4%	0.47	18.40	-16.2%	-10.9%	0.094	0.015	0.01%
IFA Hotels and Resorts	0.030	-0.001	-2.26%	3.04	4.72	0.00	19	12.2%	-42.1%	0.22	6.99	65.1%	2.5%	0.073	0.025	0.04%
Kuwait Resorts	0.084	0.001	1.21%	0.54	11.63	3.56	16	9.3%	-14.4%	0.08	0.93	4.8%	4.2%	0.105	0.067	0.04%
Future Kid Entertainment and Real Estate	0.121	-0.008	-6.20%	1.12	11.29	0.00	13	4.3%	63.9%	0.06	0.51	10.4%	4.7%	0.133	0.074	0.03%
Al Eid Food	0.248	0.005	2.06%	1.86	14.47	2.81	42	3.8%	5.3%	0.50	2.05	13.4%	10.2%	0.304	0.207	0.09%
Kuwait Hotels	0.170	0.000	0.00%	2.04	21.12	2.94	10	4.3%	142.9%	0.00	0.00	9.9%	6.4%	0.201	0.070	0.02%
Palms Agro Production	0.078	0.000	0.00%	0.79	NM	0.00	4	0.0%	14.4%	0.00	0.00	-13.8%	-10.9%	0.083	0.043	0.01%
ALI ALGanim	0.830	0.002	0.24%	4.15	11.92	5.74	227	4.4%	nm	0.22	0.26	30.5%	12.1%	0.966	0.750	0.51%
Total Consumer Services - 13 Companies							974			1.83	29.80					2.17%

DAILY MARKET COVERAGE REPORT

NIC MENA SECURITIES - RESEARCH AND STUDIES DEP



Financial Services	Price			Valuation Multiples			MKT Cap	Price Performance		Trading Indicators		ROE	ROA	52 Week (KD)		MKT Cap
	Company	Close (KD)	Day Δ	Day % Δ	PBV(X)	PE(X)	DY%	Mn KD	MTD(%)	YTD (%)	Value (Mn KD)	(Mn Shrs)	(%)	(%)	High	Low
Egypt Kuwait Holding	0.375	-0.005	-1.32%	2.10	5.63	5.62	423	-2.1%	-10.4%	0.32	0.84	37.3%	17.3%	0.454	0.353	0.94%
Kuwait Projects Company Holding	0.145	0.006	4.32%	0.71	20.54	3.60	355	22.9%	-2.1%	1.15	8.08	-2.8%	0.0%	0.215	0.112	0.79%
National Industries Group Holding	0.246	0.002	0.82%	1.08	12.29	4.55	529	5.1%	1.3%	1.13	4.61	5.3%	2.9%	0.314	0.207	1.18%
Boursa Kuwait Securities Co	2.360	0.017	0.73%	7.51	24.37	2.77	474	3.9%	16.0%	0.03	0.01	32.4%	22.9%	2.870	1.800	1.06%
GFH Financial Group	0.083	0.002	2.10%	0.98	10.25	4.48	288	6.3%	-17.5%	2.28	27.67	9.4%	1.2%	0.109	0.073	0.64%
National Investments	0.269	0.001	0.37%	1.09	19.72	16.79	214	12.6%	22.4%	0.10	0.36	5.4%	4.4%	0.475	0.201	0.48%
Tamdeen Investment	0.625	0.000	0.00%	0.67	16.36	1.60	210	13.6%	64.9%	0.00	0.00	4.4%	3.5%	0.625	0.309	0.47%
Alimtiq Investment Group	0.080	0.000	0.25%	0.47	NM	11.26	82	7.4%	-32.3%	0.04	0.56	-0.9%	-0.4%	0.138	0.069	0.18%
Commercial Facilities	0.180	-0.001	-0.55%	0.58	8.94	8.29	91	2.3%	-12.1%	0.02	0.10	6.5%	3.6%	0.228	0.165	0.20%
Aayan Leasing and Investment	0.143	0.000	0.00%	1.06	13.54	0.00	95	11.7%	-13.6%	1.97	13.73	8.2%	6.0%	0.204	0.104	0.21%
Kuwait Investment	0.139	0.002	1.46%	0.67	28.54	18.25	76	5.3%	-51.2%	0.31	2.25	2.2%	2.1%	0.304	0.113	0.17%
Noor Financial Investment	0.196	-0.005	-2.49%	1.26	5.67	2.39	100	8.9%	-21.0%	0.01	0.07	22.0%	16.2%	0.295	0.163	0.22%
Arzan Financial Group for Financing and Investment	0.128	0.001	0.79%	0.88	9.35	1.90	103	-3.0%	-18.4%	0.34	2.66	9.4%	7.0%	0.180	0.109	0.23%
Kuwait Financial Centre	0.114	-0.001	-0.87%	0.57	33.43	8.28	57	6.5%	-33.3%	0.03	0.23	1.7%	1.7%	0.189	0.101	0.13%
Gulf Investment House	0.405	0.007	1.76%	3.80	1,592.00	0.00	165	1.5%	32.7%	0.17	0.43	0.2%	0.6%	0.422	0.217	0.37%
Arabi Group Holdings	0.290	-0.007	-2.36%	1.77	NM	0.00	48	1.0%	2.1%	0.00	0.01	-29.0%	-4.0%	0.499	0.169	0.11%
Kuwait and Middle East Financial Investment	0.100	0.000	0.40%	0.86	13.46	7.00	22	-24.5%	-33.3%	0.01	0.07	6.4%	3.1%	0.175	0.091	0.05%
Privatization Holding	0.037	0.000	-0.27%	0.31	NM	0.00	22	-0.3%	-32.7%	0.02	0.64	-7.1%	-5.5%	0.063	0.032	0.05%
Asiya Capital Investments	0.055	0.001	1.11%	0.49	3.42	0.00	42	22.7%	3.8%	0.30	5.62	15.5%	15.2%	0.071	0.037	0.09%
Umm Al Qaiwain General Investment Co	0.096	0.000	0.00%	0.54	5.84	5.20	35	2.4%	10.4%	0.00	0.00	9.8%	8.1%	0.108	0.086	0.08%
Securities House	0.066	0.001	0.92%	0.67	11.97	0.00	28	11.0%	-34.2%	0.02	0.36	5.5%	4.7%	0.109	0.052	0.06%
Kamco Investment	0.110	0.005	4.76%	0.58	6.06	9.52	38	11.1%	-18.6%	0.20	1.90	9.8%	4.6%	0.167	0.089	0.08%
First Investment	0.076	0.000	0.00%	0.69	86.48	0.00	34	1.7%	-9.6%	0.33	4.42	0.8%	0.8%	0.104	0.068	0.08%
Invest BSC Public	0.095	-0.003	-2.58%	0.00	NM	0.00	28	22.3%	-17.8%	0.23	2.39	2.9%	1.8%	0.189	0.070	0.06%
Coast Investment and Development	0.080	0.001	1.14%	0.81	24.80	6.32	37	3.9%	-24.7%	0.01	0.18	3.2%	3.1%	0.126	0.066	0.08%
Al Madar Investment	0.109	0.000	0.00%	1.03	63.74	0.00	23	11.2%	-8.4%	0.00	0.00	1.6%	1.7%	0.120	0.083	0.05%
Bayan Investment	0.041	0.000	0.00%	0.31	NM	0.00	13	0.1%	-28.7%	0.00	0.00	-2.4%	-1.5%	0.067	0.036	0.03%
Al Manar Financing and Leasing	0.062	0.001	1.64%	0.60	19.87	0.00	16	2.5%	-2.1%	0.00	0.00	2.9%	2.3%	0.079	0.049	0.04%
Manazel Holding	0.030	0.001	2.05%	0.64	10.00	0.00	13	9.2%	-43.0%	0.04	1.41	6.2%	2.0%	0.060	0.025	0.03%
Kuwait Finance and Investment	0.066	0.000	0.00%	0.50	26.96	0.00	20	4.6%	-24.1%	0.00	0.00	1.7%	1.6%	0.097	0.055	0.05%
National International Holding	0.112	-0.003	-2.61%	0.70	15.80	4.22	25	1.8%	-22.1%	0.01	0.09	4.1%	2.8%	0.167	0.091	0.05%
Osoul Investment	0.089	0.000	0.00%	0.81	NM	11.90	11	0.0%	8.9%	0.00	0.00	-4.4%	-4.0%	0.118	0.062	0.03%
UniCap Investment and Finance	0.056	0.000	-0.71%	0.62	66.35	0.00	13	0.9%	-17.7%	0.00	0.05	1.9%	0.2%	0.085	0.050	0.03%
Amar Finance and Leasing	0.060	-0.003	-4.76%	0.58	3.42	0.00	12	-4.8%	-3.8%	0.00	0.01	18.6%	17.3%	0.080	0.058	0.03%
Gulf North Africa Holding	0.171	-0.005	-2.84%	1.72	59.40	0.00	20	15.5%	104.4%	0.23	1.34	3.0%	2.4%	0.141	0.057	0.04%
International Financial Advisors	0.096	0.000	0.42%	0.62	38.55	0.00	24	10.8%	-15.0%	0.06	0.61	1.9%	0.7%	0.127	0.082	0.05%
Credit Rating and Collection	0.021	0.005	33.77%	0.54	NM	0.00	3	28.8%	-61.7%	0.00	0.13	-0.5%	-0.4%	0.069	0.014	0.01%
Ekttitab Holding	0.011	0.000	0.90%	0.37	NM	0.00	4	4.7%	-47.9%	0.01	0.84	-17.2%	-13.2%	0.021	0.009	0.01%
Kuwait Syrian Holding Co	0.037	0.000	0.00%	0.36	5.95	0.00	7	8.5%	-13.8%	0.00	0.00	8.7%	6.2%	0.059	0.026	0.01%
Warba Capital Holding	0.097	0.001	1.04%	1.06	NM	0.00	10	13.5%	11.4%	0.02	0.16	-0.8%	-0.7%	0.118	0.070	0.02%
National Consumer Holding	0.125	0.003	2.46%	5.53	NM	0.00	38	12.6%	1.7%	0.52	4.16	-8.0%	-7.5%	0.158	0.097	0.08%
Al Deera Holding	0.158	-0.001	-0.63%	1.06	8.01	0.00	14	-5.4%	-20.5%	0.00	0.02	12.5%	6.5%	0.200	0.145	0.03%
AL Safat Investment	0.126	0.004	3.28%	1.59	NM	0.00	36	28.0%	0.1%	1.43	11.20	-2.8%	-2.1%	0.270	0.091	0.08%
Gulf Franchising Holding	0.094	0.004	4.70%	1.13	3.36	0.00	4	14.0%	-6.9%	0.00	0.00	40.5%	13.1%	0.148	0.063	0.01%
Total Financial Services - 44 Companies							3,899			11.37	97.23					8.68%

DAILY MARKET COVERAGE REPORT

NIC MENA SECURITIES - RESEARCH AND STUDIES DEP



Health Care	Price			Valuation Multiples			MKT Cap	Price Performance		Trading Indicators		ROE	ROA	52 Week (KD)		MKT Cap
	Company	Close (KD)	Day Δ	Day % Δ	PBV(X)	PE(X)		DY%	Mn KD	MTD(%)	YTD (%)			Value (Mn KD)	(Mn Shrs)	
Al-Maidan Clinic for Oral Health Services	0.694	0.000	0.00%	2.75	15.27	0.00	156	-0.1%	-49.6%	0.00	0.00	19.4%	12.5%	1.400	0.556	0.35%
Advanced Technology	0.409	0.000	0.00%	0.91	11.08	3.67	61	-18.0%	-21.0%	0.00	0.00	8.4%	1.7%	0.595	0.409	0.14%
Yiaco Medical	0.450	0.000	0.00%	43.51	NM	0.00	8	0.0%	2.7%	0.00	0.00	-161.7%	-4.7%	0.480	0.399	0.02%
Total Health Care - 3 Companies							225			0.00	0.00					0.50%

Industrials	Price			Valuation Multiples			MKT Cap	Price Performance		Trading Indicators		ROE	ROA	52 Week (KD)		MKT Cap
	Company	Close (KD)	Day Δ	Day % Δ	PBV(X)	PE(X)		DY%	Mn KD	MTD(%)	YTD (%)			Value (Mn KD)	(Mn Shrs)	
Agility Public Warehousing	0.787	0.000	0.00%	1.46	51.88	2.12	1,988	0.4%	-0.1%	1.98	2.52	2.3%	1.9%	1.062	0.634	4.43%
Human Soft Holding	3.422	-0.008	-0.23%	3.45	7.23	11.66	416	1.8%	6.4%	0.14	0.04	49.6%	34.9%	3.704	3.006	0.93%
Alafco Aviation Lease and Finance	0.170	0.000	0.00%	0.63	NM	0.00	162	1.2%	-22.0%	0.04	0.23	-15.9%	-3.4%	0.251	0.162	0.36%
Kuwait Cement	0.231	0.000	0.00%	0.85	163.83	2.16	165	9.5%	0.0%	0.04	0.18	0.5%	0.3%	0.295	0.194	0.37%
Gulf Cable and Electrical Industries	1.275	0.022	1.76%	1.21	12.11	4.79	265	5.8%	43.9%	0.11	0.09	10.2%	8.4%	1.850	0.860	0.59%
Integrated Holding	0.361	0.005	1.40%	1.47	27.22	2.81	91	10.7%	-3.8%	0.30	0.83	5.4%	3.4%	0.478	0.321	0.20%
Kuwait Portland Cement	0.819	0.002	0.24%	1.12	16.87	8.57	82	-1.9%	-16.6%	0.02	0.02	6.6%	4.8%	1.240	0.751	0.18%
Educational Holding Group	2.500	0.000	0.00%	4.25	9.49	21.31	53	2.0%	-37.5%	0.01	0.00	30.0%	17.2%	4.431	2.300	0.12%
United Projects for Aviation Services	0.211	0.000	0.00%	0.76	45.57	0.00	80	3.4%	-14.9%	0.00	0.00	1.7%	1.0%	0.298	0.182	0.18%
Heavy Engineering Industries and Shipbuilding	0.688	0.007	1.03%	1.80	22.56	2.94	124	10.1%	33.8%	0.19	0.28	8.1%	3.2%	0.960	0.442	0.28%
National Industries	0.190	0.000	0.00%	0.78	11.98	5.26	66	-0.5%	-1.6%	0.11	0.61	6.5%	4.7%	0.260	0.181	0.15%
ACICO Industries	0.088	0.002	2.09%	0.39	NM	0.00	29	-3.0%	-38.0%	0.04	0.50	-1.9%	-0.5%	0.208	0.076	0.06%
Kuwait Company for Process Plant Construction a	0.300	-0.004	-1.32%	1.18	17.07	8.15	36	-2.3%	-35.9%	0.00	0.01	6.9%	4.1%	0.513	0.286	0.08%
Ras Al Khaimah for White Cement and Constructi	0.141	0.001	0.71%	1.28	35.13	5.92	71	0.7%	11.1%	0.01	0.05	3.6%	3.0%	0.175	0.113	0.16%
Combined Group Contracting	0.400	0.001	0.25%	1.41	7.61	6.27	68	-2.4%	12.7%	0.42	1.04	19.6%	4.8%	0.500	0.308	0.15%
Kuwait and Gulf Link Transport	0.062	0.001	1.30%	0.36	3.32	0.00	17	8.3%	-9.8%	0.02	0.39	11.6%	2.6%	0.089	0.054	0.04%
Shuaiba Industrial	0.159	0.006	3.92%	0.82	11.72	7.84	16	6.7%	-32.0%	0.01	0.10	6.6%	5.4%	0.310	0.137	0.04%
National Cleaning	0.037	-0.001	-1.58%	0.30	NM	0.00	9	-0.3%	-33.2%	0.00	0.00	-13.9%	-4.1%	0.066	0.031	0.02%
Fujairah Cement Industries	0.036	0.000	0.00%	0.22	NM	0.00	13	-6.5%	-33.5%	0.00	0.00	-13.8%	-6.6%	0.060	0.028	0.03%
Mubarrad Holding	0.084	0.000	-0.24%	0.65	8.89	5.94	14	5.0%	-23.5%	0.02	0.18	7.3%	6.5%	0.120	0.071	0.03%
Specialities Group Holding	0.111	0.002	1.83%	0.57	6.51	6.23	18	20.8%	-12.3%	0.05	0.45	8.8%	6.0%	0.152	0.076	0.04%
Salbookh Trading	0.016	0.001	8.61%	0.46	NM	0.00	2	-11.4%	-65.2%	0.02	1.26	-51.7%	-28.6%	0.057	0.015	0.00%
Metal and Recycling	0.078	-0.016	-16.83%	1.21	NM	0.00	7	-13.4%	-1.2%	0.00	0.04	-12.0%	-2.0%	0.113	0.060	0.02%
Equipment Holding	0.049	0.002	4.04%	0.75	NM	0.00	4	52.8%	-13.8%	0.00	0.10	-11.1%	-3.2%	0.075	0.030	0.01%
Jassim Transport & Stevedoring	0.337	0.007	2.12%	1.09	13.20	4.85	51	2.4%	-18.9%	0.01	0.12	8.6%	6.7%	0.410	0.300	0.11%
Total Industrials - 24 Companies							3,845			3.55	9.02					8.56%

DAILY MARKET COVERAGE REPORT

NIC MENA SECURITIES - RESEARCH AND STUDIES DEP



Insurance	Price			Valuation Multiples			MKT Cap	Price Performance		Trading Indicators		ROE	ROA	52 Week (KD)		MKT Cap
	Company	Close (KD)	Day Δ	Day % Δ	PBV(X)	PE(X)		DY%	Mn KD	MTD(%)	YTD (%)			Value (Mn KD)	(Mn Shrs)	
Gulf Insurance Group	1.020	0.000	0.00%	1.18	4.37	10.39	289	3.6%	-4.7%	0.00	0.00	28.6%	5.5%	1.147	0.943	0.64%
Al Ahleia Insurance	0.501	0.001	0.20%	0.83	6.90	7.00	109	-1.6%	-1.0%	0.01	0.01	12.5%	4.4%	0.612	0.453	0.24%
Kuwait Insurance	0.519	-0.009	-1.70%	0.79	8.19	6.25	96	5.1%	36.4%	0.00	0.00	10.4%	6.1%	0.533	0.379	0.21%
Kuwait Reinsurance	0.284	0.000	0.00%	1.01	9.30	1.62	68	-0.7%	12.6%	0.00	0.00	11.3%	3.6%	0.373	0.217	0.15%
Bahrain Kuwait Insurance	0.191	0.000	0.00%	1.31	11.89	8.44	29	0.0%	0.0%	0.00	0.00	10.9%	2.2%	0.191	0.191	0.06%
Warba Insurance and Reinsurance	0.120	0.000	0.00%	0.55	12.37	8.33	20	-4.8%	-24.5%	0.01	0.06	4.3%	1.5%	0.165	0.119	0.05%
First Takaful Insurance	0.044	-0.002	-3.52%	0.60	284.38	0.00	5	-3.5%	-9.0%	0.00	0.00	0.2%	0.1%	0.070	0.034	0.01%
Wethaq Takaful Insurance	0.032	-0.005	-12.97%	0.99	21.64	0.00	4	-13.0%	-27.3%	0.17	5.12	2.3%	2.3%	0.066	0.024	0.01%
Total Insurance - 8 Companies							619			0.18	5.19					1.38%

Energy	Price			Valuation Multipels			MKT Cap	Price Performance		Trading Indicators		ROE	ROA	52 Week (KD)		MKT Cap
	Company	Close (KD)	Day Δ	Day % Δ	PBV(X)	PE(X)		DY%	Mn KD	MTD(%)	YTD (%)			Value (Mn KD)	(Mn Shrs)	
National Petroleum Services	0.750	0.030	4.17%	1.71	10.05	4.86	73	7.6%	-12.2%	0.01	0.01	14.5%	11.6%	0.860	0.625	0.16%
Independent Petroleum Group	0.480	-0.007	-1.44%	0.85	12.30	6.16	87	11.6%	-17.2%	0.00	0.00	7.1%	1.5%	0.612	0.368	0.19%
Burgan for Well Drilling Trading and Maintenance	0.119	0.000	0.00%	0.44	9.98	2.29	31	3.5%	-11.0%	0.01	0.08	4.4%	1.4%	0.161	0.094	0.07%
Energy House Holding	0.022	0.001	5.39%	0.74	NM	0.00	16	-0.9%	-67.7%	0.03	1.60	-1.4%	-2.5%	0.080	0.019	0.04%
Gulf Petroleum Investment	0.016	0.000	-1.26%	0.22	NM	0.00	7	-1.9%	-35.1%	0.03	1.83	-4.0%	-2.6%	0.029	0.013	0.02%
Senergy Holding	0.042	0.001	1.20%	0.83	49.40	0.00	8	8.0%	-15.3%	0.01	0.16	1.7%	1.4%	0.056	0.035	0.02%
Total Energy - 6 Companies							222			0.09	3.68					0.49%

DAILY MARKET COVERAGE REPORT

NIC MENA SECURITIES - RESEARCH AND STUDIES DEP



Real Estate	Price		Valuation Multiples				MKT Cap	Performance		Trading Indicators		ROE	ROA	2 Week (KD)		MKT Cap
Company	Close (KD)	Day Δ	Day % Δ	PBV(X)	PE(X)	DY%	Mn KD	MTD(%)	YTD (%)	Value (Mn KD)	(Mn Shrs)	(%)	(%)	High	Low	%
Mabane Co.	0.896	0.003	0.34%	1.97	18.48	1.48	1,113	2.8%	19.4%	0.30	0.34	11.1%	5.5%	0.910	0.717	2.48%
Salhia Real Estate	0.514	0.004	0.78%	1.63	16.79	2.80	265	10.3%	1.2%	0.71	1.37	9.9%	4.0%	0.543	0.428	0.59%
Commercial Real Estate	0.100	0.000	0.40%	0.61	10.21	5.04	175	0.2%	-20.6%	0.36	3.62	6.2%	3.3%	0.137	0.094	0.39%
National Real Estate	0.149	-0.001	-0.67%	0.89	1.33	0.00	277	6.4%	-18.6%	0.51	3.42	-3.5%	-2.4%	0.212	0.125	0.62%
Tamdeen Real Estate	0.385	0.000	0.00%	0.71	9.18	2.60	155	4.1%	13.6%	0.00	0.00	8.2%	3.6%	0.390	0.296	0.34%
Kuwait Real Estate	0.110	0.000	0.00%	0.81	16.08	2.65	102	0.0%	-36.7%	0.39	3.58	4.9%	1.9%	0.187	0.097	0.23%
United Real Estate	0.076	0.002	2.03%	0.46	107.25	0.00	81	5.6%	-1.9%	0.01	0.10	0.4%	-0.1%	0.121	0.064	0.18%
First Dubai for Real Estate Development	0.056	0.000	0.18%	0.53	26.06	0.00	41	13.0%	-46.4%	0.06	1.05	2.1%	1.7%	0.115	0.044	0.09%
Al Mazaya Holding	0.052	0.000	0.58%	0.52	39.17	0.00	33	5.9%	-31.9%	0.10	1.96	1.3%	0.7%	0.082	0.043	0.07%
Ajial Real Estate Entertainment	0.295	0.000	0.00%	0.43	19.42	1.69	57	8.1%	-3.0%	0.00	0.00	2.2%	1.8%	0.344	0.268	0.13%
Injazat Real Estate Development	0.079	-0.001	-1.00%	0.47	6.39	6.25	27	2.5%	-20.0%	0.03	0.34	7.5%	3.9%	0.114	0.070	0.06%
Munshaat Real Estate Projects	0.062	0.000	0.00%	1.86	5.13	0.00	20	3.2%	-13.4%	0.00	0.00	42.9%	4.5%	0.076	0.051	0.04%
Aayan Real Estate	0.077	-0.001	-0.64%	0.54	25.34	0.00	32	15.4%	-12.1%	0.00	0.02	2.2%	2.3%	0.102	0.056	0.07%
Al Argan International Real Estate	0.094	0.000	0.00%	0.31	34.43	0.00	24	7.4%	-19.7%	0.00	0.02	0.9%	0.3%	0.144	0.073	0.05%
Al-Enmaa Real Estate	0.063	0.002	3.28%	0.67	NM	0.00	28	6.3%	-18.3%	0.01	0.15	-5.9%	NM	0.086	0.050	0.06%
Arkan Al Kuwait Real Estate	0.120	0.000	0.00%	0.85	11.70	5.00	30	-3.2%	-3.2%	0.00	0.00	7.4%	2.3%	0.149	0.113	0.07%
Kuwait Business Town Real Estate	0.059	0.002	2.60%	0.71	11.92	0.00	34	1.2%	-29.0%	0.08	1.24	5.0%	3.4%	0.092	0.046	0.08%
Dalqan Real Estate	0.224	0.001	0.45%	2.00	206.48	0.00	14	8.2%	2.8%	0.05	0.21	1.0%	1.0%	0.260	0.195	0.03%
Sokouk Holding	0.025	0.000	0.00%	0.58	15.71	0.00	14	2.4%	-22.4%	0.00	0.01	3.8%	1.7%	0.036	0.020	0.03%
Tijara and Realestate Investment	0.057	0.000	0.70%	0.51	8.66	5.26	21	6.3%	-6.7%	0.02	0.37	6.0%	3.3%	0.089	0.044	0.05%
Al-Arabiya Real Estate	0.033	0.002	5.77%	0.37	NM	0.00	17	13.0%	-25.5%	0.16	5.10	-23.1%	-7.3%	0.049	0.026	0.04%
Aqar Real Estate Investments	0.063	0.000	0.00%	0.51	19.97	5.33	15	11.8%	-20.7%	0.00	0.02	2.6%	2.1%	0.088	0.052	0.03%
Mashaer Holding	0.061	0.000	0.00%	0.72	NM	0.00	11	11.3%	-12.7%	0.00	0.00	-6.5%	-3.2%	0.080	0.049	0.02%
Dar Al Thuraya Real Estate	0.170	0.000	0.00%	1.47	25.07	0.00	25	0.0%	61.9%	0.00	0.00	6.0%	5.3%	0.172	0.099	0.06%
Osos Holding Group	0.103	0.000	0.00%	0.91	8.97	9.71	11	-6.4%	-1.9%	0.00	0.00	10.2%	6.5%	0.147	0.094	0.02%
Al Massaleh Real Estate	0.030	0.000	0.00%	0.49	NM	0.00	7	-14.3%	-42.4%	0.00	0.02	-15.4%	-3.2%	0.056	0.030	0.02%
Kuwait Remal Real Estate	0.008	0.000	0.00%	1.09	NM	0.00	2	-1.2%	-58.6%	0.00	0.00	-114.8%	-12.4%	0.022	0.007	0.01%
Kuwait Real Estate Holding	0.035	0.000	0.00%	0.65	12.64	0.00	7	2.6%	-33.9%	0.00	0.00	5.1%	1.7%	0.057	0.031	0.01%
Taameer Real Estate Investment	0.024	0.000	-1.26%	0.38	NM	0.00	5	-0.8%	-42.1%	0.00	0.14	-6.5%	-4.9%	0.054	0.018	0.01%
Sanam Real Estate	0.060	0.000	0.68%	0.78	66.40	0.00	7	-8.2%	-25.1%	0.00	0.00	1.2%	1.0%	0.100	0.053	0.02%
Mena Real Estate	0.028	0.000	0.00%	0.25	NM	0.00	4	-2.1%	-43.4%	0.00	0.00	-6.8%	-5.4%	0.089	0.028	0.01%
Al Masaken International Real Estate Developmen	0.028	0.000	0.71%	0.45	NM	0.00	3	-1.1%	-36.2%	0.01	0.35	-1.1%	-0.4%	0.057	0.026	0.01%
Real Estate Trade Centers	0.060	-0.005	-7.23%	0.36	17.47	0.00	8	17.5%	-7.1%	0.00	0.02	2.1%	1.7%	0.115	0.043	0.02%
Land United Real Estate	0.068	0.000	0.00%	0.60	NM	0.00	10	0.0%	-27.6%	0.00	0.00	-4.8%	-1.5%	0.118	0.052	0.02%
Total Real Estate - 34 Companies							2,674			2.81	23.46					5.96%

DAILY MARKET COVERAGE REPORT

NIC MENA SECURITIES - RESEARCH AND STUDIES DEP



Technology	Price			Valuation Multiples			MKT Cap	Price Performance		Trading Indicators		ROE	ROA	52 Week (KD)		MKT Cap
	Close (KD)	Day Δ	Day % Δ	PBV(X)	PE(X)	DY%	Mn KD	MTD(%)	YTD (%)	Value (Mn KD)	(Mn Shrs)	(%)	(%)	High	Low	%
Automated Systems	0.086	0.001	1.06%	0.76	NM	0.00	9	2.5%	-9.6%	0.01	0.09	-3.2%	-2.8%	0.110	0.074	0.02%
Total Technology - 1 Companies				0.76	NM	0.0%	9			0.01	0.09	-3.21%	-2.82%			0.02%

Telecom	Price			Valuation Multiples			MKT Cap	Price Performance		Trading Indicators		ROE	ROA	52 Week (KD)		MKT Cap
	Close (KD)	Day Δ	Day % Δ	PBV(X)	PE(X)	DY%	Mn KD	MTD(%)	YTD (%)	Value (Mn KD)	(Mn Shrs)	(%)	(%)	High	Low	%
Mobile Telecommunications	0.617	0.002	0.33%	2.21	14.15	5.37	2,670	3.0%	3.4%	2.74	4.45	15.7%	4.3%	0.698	0.564	5.95%
Kuwait Telecommunications	0.575	0.000	0.00%	2.48	12.66	5.22	574	-2.5%	34.5%	0.51	0.88	20.3%	11.1%	1.189	0.418	1.28%
National Mobile Telecommunications	1.180	0.021	1.81%	1.09	15.04	3.02	591	15.1%	85.7%	0.34	0.28	7.2%	4.2%	1.280	0.615	1.32%
AAN Digital Services	0.016	0.000	0.00%	2.48	NM	0.00	14	0.0%	-2.4%	0.00	0.00	-99.6%	NM	0.020	0.016	0.03%
Hayat Communications	0.057	-0.001	-1.04%	0.46	NM	0.00	5	-3.6%	-45.8%	0.01	0.13	-0.7%	-0.3%	0.120	0.050	0.01%
Telecom - 5 Companies							3,854			3.59	5.74					8.58%

Utilities	Price			Valuation Multiples			MKT Cap	Price Performance		Trading Indicators		ROE	ROA	52 Week (KD)		MKT Cap
	Close (KD)	Day Δ	Day % Δ	PBV(X)	PE(X)	DY%	Mn KD	MTD(%)	YTD (%)	Value (Mn KD)	(Mn Shrs)	(%)	(%)	High	Low	%
Shamal Az-Zour Al-Oula Power & Water	0.196	0.000	0.00%	1.82	16.12	9.18	216	1.6%	-14.0%	0.04	0.19	14.8%	2.7%	0.240	0.188	0.48%
Total Utilities - 1 Companies							216			0.04	0.19					0.48%

Total Market 155 Companies				1.99	26.71	3.96	44,899			45.37	215.68					100%
-----------------------------------	--	--	--	-------------	--------------	-------------	---------------	--	--	--------------	---------------	--	--	--	--	-------------

End of Report

The information contained in this document is proprietary to NIC and is for use only by the persons to whom it is issued. This document is confidential and may not be distributed either in part or in whole without the express agreement of NIC. It is intended solely for the use of the individual or entity to whom it is addressed and others authorized to receive it.

Note : ROE and ROA is calculated based on LFY net profit & shareholders' equity and LFY Operating Profits & Total Assets

Sources : National Investments Company Research and Studies Departments, Boursa, Refinitiv.



شركة الاستثمار الوطنية
NATIONAL INVESTMENTS COMPANY

Sharq, Al Mutanabi Street, Khaleejia Tower | P.O. Box 25667, Safat 13117, Kuwait

T.: +965 2226 6666 | Fax: +965 2226 6793 | www.nic.com.kw